



# COMPANY PRESENTATION

2021

# ASTM GROUP

GLOBAL PLAYER IN PLANNING, CONSTRUCTING AND MANAGING INFRASTRUCTURE NETWORKS





# SINELEC

TECHNOLOGY COMPANY OF ASTM GROUP



SINELEC gathers together the technological expertise of the Group in the fields of Electronic Toll Collection (ETC) and Intelligent Transportation Systems (ITS)

With 20+ years of experience in developing, deploying and maintaining advanced technology solutions for the highway sector, today SINELEC is leading the way towards the SMART ROADS of the future.



# WHO WE ARE

## AT A GLANCE

Sinelec is an end-to-end technology player that provides complete leading-edge solutions to support interconnected roadways, bridges and tunnels

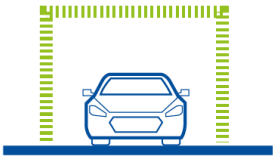
### Company

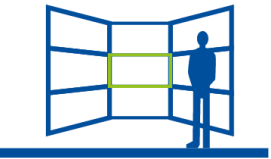
 Solutions for mobility and transportation infrastructure





 300+ direct employees


### Key facts


 900 toll gates


 14 operational control centers

 3B € processed per year

 1,5M transits managed per day

 3000+ CCTV cameras

 2.000 km fiber optic WAN

 24/7/365 maintenance service

# WHAT WE DO

TECHNOLOGY LEADER

- Technology advisory services
- Products and solutions
- System integration
- Operation and maintenance



# PORTFOLIO

## OUR SOLUTIONS

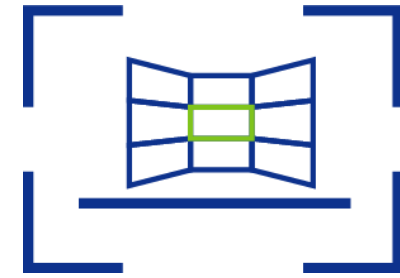


### tolling & access management



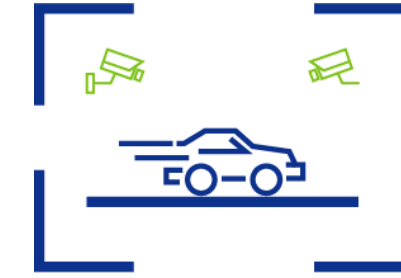
- Toll gates (manual, self-service, electronic, mixed)
- Multi-lane free-flow
- Vehicle identification/classification solutions
- Operational and commercial back-office systems
- Access automation (smart parking, logistic sites)

### operations & traffic management



- Advanced Traffic Management System ATMS

### safety & security



- Weigh-In-Motion
- Tunnel safety systems
- IoT monitoring
- Enforcement solutions (speed-limit)
- Advanced video analytics for AID and traffic"

### connected mobility



- Wi-fi in motion service network
- C-ITS platform – V2I ready
- Broadband network solutions

# CERTIFICATIONS

EXPERIENCED AND CERTIFIED CROSS-TECHNOLOGY PLAYER IN PUBLIC AND PRIVATE WORKS

The choice of creating sustainable solutions, guaranteeing workplace safety and protecting information security, is recognized by the certification of our integrated management system:

QUALITY

UNI EN ISO 9001: 2015

ENVIRONMENTAL

UNI EN ISO 14001: 2015

SAFETY

UNI EN ISO 45001: 2018

INFORMATION SECURITY

UNI CEI EN ISO / IEC 27001: 2017

CERTIFIED  
MANAGEMENT SYSTEMS



UNI EN ISO **9001:2015**  
UNI EN ISO **14001:2015**  
UNI ISO **45001:2018**  
UNI CEI EN ISO/IEC **27001:2017**



CERTIQUALITY  
IS MEMBER OF  
CISQ FEDERATION

SOA qualified





# R&D

## OPEN INNOVATION PARADIGM





# WHY SINELEC

DISCOVER OUR PLUS



Proven strong expertise in helping customers to build, test and implement reliable technology platforms in complex multidisciplinary projects

## ONE STOP SHOP EXPERIENCE

With a wide portfolio and extended technological capabilities, we guarantee an end-to-end approach

## TAILORED SOLUTIONS

We can adapt our solutions to customer requirements, best fitting his business model

## TECHNOLOGICAL AGNOSTIC

Our solutions are completely open to integrate different ITS hardware platforms (e.g. TVCC, VMS, SOS, Automatic Incident Detection,...)



# Thank you.

**Headquarters**

SINELEC S.p.A.

Località Passalacqua, 2/2  
15057 Tortona (AL)  
ITALY  
Tel +39 0131 8791

[info@sinelec.it](mailto:info@sinelec.it)  
[www.sinelec.it](http://www.sinelec.it)

SINELEC USA Inc.

421 East Route 59  
Nanuet, NY 10954  
USA  
Tel. +1 845 627 5442

[info@sinelec.it](mailto:info@sinelec.it)  
[www.sinelec.it](http://www.sinelec.it)

SINELEC S.p.A. - Abu Dhabi

Al Hamed Tower, 2° Floor  
Muroor Road – Al Falah Plaza  
P.O. Box 34869, Abu Dhabi, UAE  
Tel. +971 2 626 7566

[info@sinelecuae.com](mailto:info@sinelecuae.com)  
[www.sinelecuae.com](http://www.sinelecuae.com)